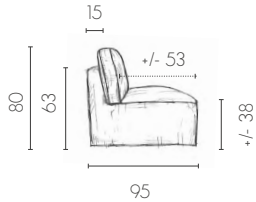


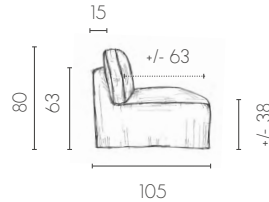


1 - PROFONDEUR

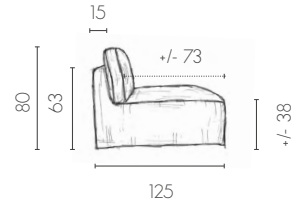
TAILLE S SIZE S



TAILLE L SIZE L

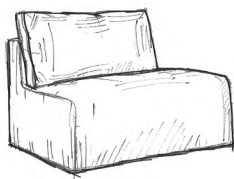


TAILLE XL SIZE XL



Confection uniquement avec un tissu «souple» type lin (tissu épais ou velours rayé impossible) / Made only with a «soft» linen type fabric (thick fabric or striped velvet impossible)

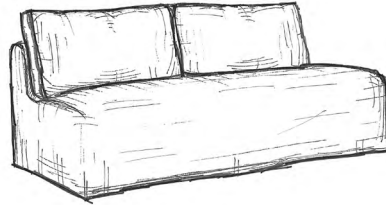
2 - CHAUFFEUSE ET MODULE D'ANGLE



SIMPLE

S/L/XL

60 CM x .....  
90 CM x .....



S/L XL

120 CM x .....  
140 CM x .....  
160 CM x .....  
180 CM x .....  
200 CM x .....  
220 CM x .....  
240 CM x .....

DOUBLE

S/L/XL

80 X 160 CM x .....  
80 X 180 CM x .....  
100 X 180 CM x .....



LONGUE



LONG COUSSINS PLACÉS  
LONG PLACED CUSHIONS

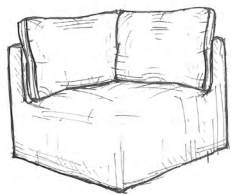
(UNIQUEMENT MONO ASSISE /  
ONLY SINGLE SEAT)



LONG MONO DOSSIER  
LONG SINGLE BACKREST

(UNIQUEMENT MONO ASSISE /  
ONLY SINGLE SEAT)

95 X 180 CM (S) x .....  
105 X 180 CM (L) x .....



SIMPLE

95 X 95 CM (S) x .....  
105 X 105 CM (L) x .....

TISSU STRUCTURE  
+ ACCOUDOIRS  
+ ASSISE

FABRIC STRUCTURE  
+ ARMRESTS + SEATS

COUTURES

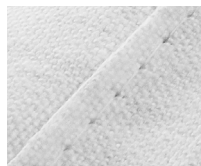
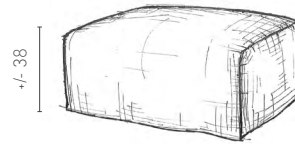


PLATE / FLAT SEAM

POUF

A compléter uniquement si le pouf est différent de la composition  
To be completed only if the pouf is different from the composition



50 X 50 CM x .....  
80 X 80 CM x .....

70 X 92 CM (S)\* x .....  
92 X 92 CM (S)\* x .....

70 X 102 CM (L)\* x .....  
92 X 102 CM (L)\* x .....  
102 X 102 CM (L)\* x .....

TISSU

FABRIC

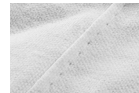
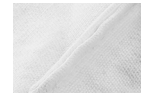
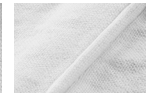


PLATE  
FLAT SEAM



ECRASEE  
CRUSHED SEAM



PASSEPOIL  
PIPING SEAM



LISERE (OPTION)\*\*  
EDGING SEAM

TISSU COUTURE  
FABRIC SEAMS

PIEDS

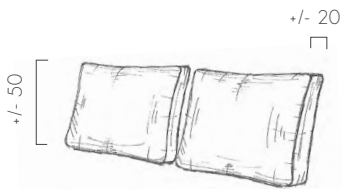
PIEDS EN RETRAIT - PVC 2,5 CM NOIR



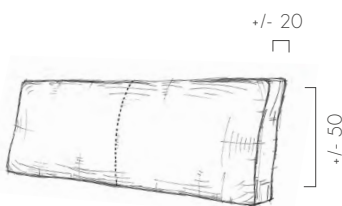
## SOFAREV

LE CONFORT AUTREMENT

### FINITION DOUBLE COUTURE

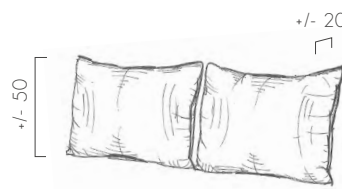


PLACÉS / CUSHIONS PLACED

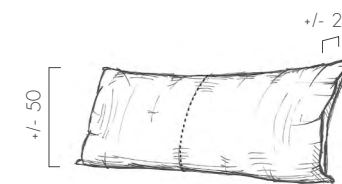


MONO\* (OPTION) / SINGLE CUSHION

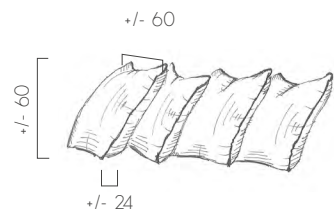
### FINITION SIMPLE COUTURE



PLACÉS / CUSHIONS PLACED



MONO\* (OPTION) / SINGLE CUSHION



MULTI (OPTION) / MULTI CUSHIONS

### TISSU (MONO OU PLACÉS)

FABRIC (MONO OR PLACED)

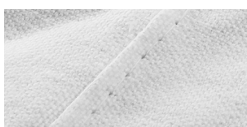
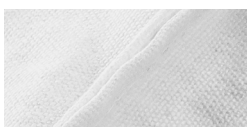
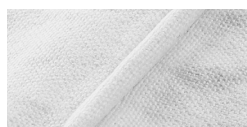


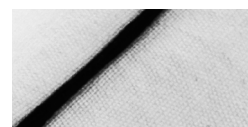
PLATE  
FLAT SEAM



ECRASÉE  
CRUSHED SEAM



PASSEPOIL  
PIPING SEAM



LISÉRÉ (OPTION)\*\*  
EDGING SEAM

### TISSU COUTURE

FABRIC SEAM

### TISSU MULTI / FACE A :

FABRIC (MULTI) FACE A

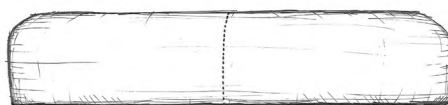
/ FACE B :

FABRIC (MULTI) FACE B

3 - DOSSIER

Double Face tissu (inclus)

4 - ASSISE



MONO ASSISE\* (ASSISE RÉVERSIBLE : NON DISPONIBLE)

CONFORT MOELLEUX (STANDARD) - 35 KG/HR

CONFORT MEDIUM (+ FERME) - 40 KG/HR (OPTION)\*\*



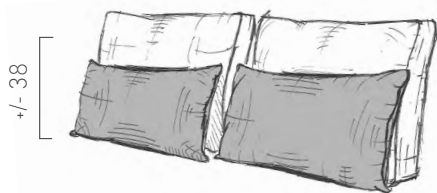
## SOFAREV

LE CONFORT AUTREMENT

PLACÉS CUSHIONS PLACED

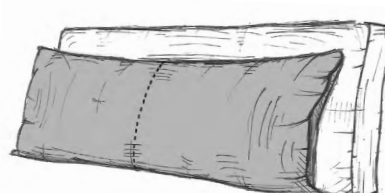
MONO SINGLE CUSHION

Epaisseur : +/- 16  
Thickness



+/- 38

Epaisseur : +/- 16  
Thickness



DOUBLE COUSSINAGE (PLACÉS)  
SIMPLE COUTURE

DOUBLE COUSSINAGE\* (MONO)  
SIMPLE COUTURE

DOUBLE CUSHIONING THICKNESS (PLACED) SIMPLE STITCHING

DOUBLE CUSHIONING \* (MONO) SIMPLE STITCHING

Chausseuse simple 60 = 1 coussin : L55 x H43 x P16	x .....
Chausseuse simple 90 = 1 coussin : L85 x H43 x P16	x .....
Chausseuse double 120 cm = 2 coussins : L55 x H43 x P16	x .....
Chausseuse double 140 cm = 2 coussins : L65 x H43 x P16	x .....
Chausseuse double 160 cm = 2 coussins : L75 x H43 x P16	x .....
Chausseuse double 180 cm = 2 coussins : L85 x H43 x P16	x .....
Chausseuse double 200 cm = 2 coussins : L95 x H43 x P16	x .....
Chausseuse double 220 cm = 2 coussins : L105 x H43 x P16	x .....
Chausseuse double 240 cm = 2 coussins : L115 x H43 x P16	x .....
Chausseuse Longue 80 x 160 cm = 1 coussin : L75 x H43 x P16	x .....
Chausseuse Longue 80 x 180 cm = 1 coussin : L75 x H43 x P16	x .....
Chausseuse Longue 100 x 180 cm = 1 coussin : L95 x H43 x P16	x .....
Angle simple 95 x 95 cm = 1 coussin : L55 x H43 x P16	x .....
et 1 coussin : L65 x H43 x P16	x .....
Angle simple 105 x 105 cm = 1 coussin : L65 x H43 x P16	x .....
et 1 coussin : L75 x H43 x P16	x .....
Angle long 95 x 180 cm = 1 coussin L55 x H43 x P16	x .....
et 2 coussins L75 xH 43 x P16	x .....
Angle long 105 x 180 cm = 1 coussin L65 x H43 x P16	x .....
et 2 coussins L75 xH 43 x P16	x .....

Chausseuse double 120 cm = 1 coussin : L115 x H43 x P16	x .....
Chausseuse double 140 cm = 1 coussin : L135 x H43 x P16	x .....
Chausseuse double 160 cm = 1 coussin : L155 x H43 x P16	x .....
Chausseuse double 180 cm = 1 coussin : L175 x H43 x P16	x .....
Chausseuse double 190 cm = 1 coussin : L185 x H43 x P16	x .....
Chausseuse double 200 cm = 1 coussin : L195 x H43 x P16	x .....
Chausseuse double 220 cm = 1 coussin : L215 x H43 x P16	x .....
Chausseuse double 240 cm = 1 coussin : L235 x H43 x P16	x .....
Chausseuse Longue 80 x 160 cm = 1 coussin : L75 x H43 x P16	x .....
Chausseuse Longue 80 x 180 cm = 1 coussin : L75 x H43 x P16	x .....
Chausseuse Longue 100 x 180 cm = 1 coussin : L95 x H43 x P16	x .....
Angle long 95 x 180 cm = 1 coussin L55 x H43 x P16	x .....
et 1 coussin L155 xH 43 x P16	x .....
Angle long 105 x 180 cm = 1 coussin L65 x H43 x P16	x .....
et 1 coussin L155 xH 43 x P16	x .....

TISSU .....

FABRIC

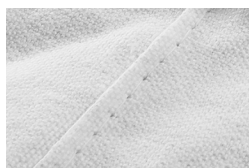
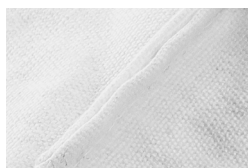
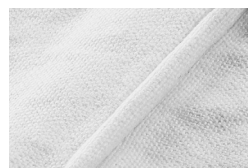


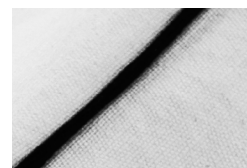
PLATE  
FLAT SEAM



ECRASÉE  
CRUSHED SEAM



PASSEPOIL  
PIPING SEAM



LISÉRÉ (OPTION)\*\*  
EDGING SEAM

TISSU COUTURE .....

FABRIC SEAM

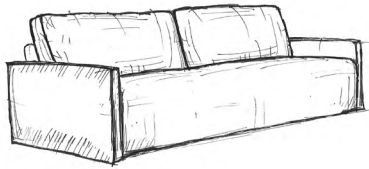
5 - DOUBLE COUSSINAGE (OPTION)



SOFAREV  
LE CONFORT AUTREMENT

ACCOUDOIRS BAS\*

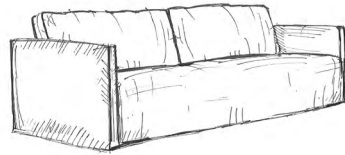
LOW ARMRESTS



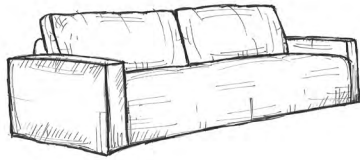
5 CM DOUBLE COUTURE x .....

ACCOUDOIRS HAUTS\*

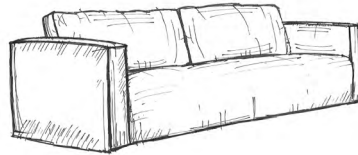
UP ARMRESTS



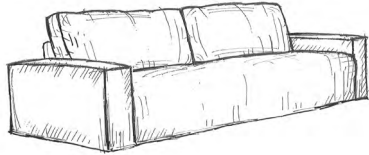
5 CM DOUBLE COUTURE x .....



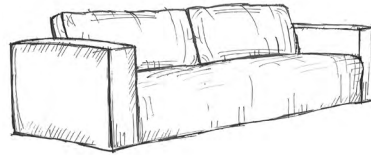
10 CM DOUBLE COUTURE x .....



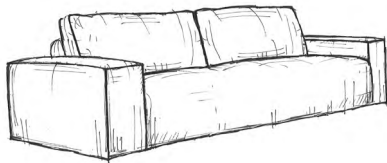
10 CM DOUBLE COUTURE x .....



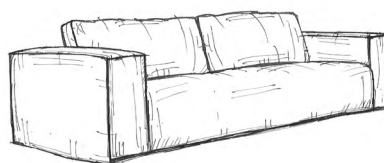
18 CM DOUBLE COUTURE x .....



18 CM DOUBLE COUTURE x .....



27 CM DOUBLE COUTURE x .....



27 CM DOUBLE COUTURE x .....

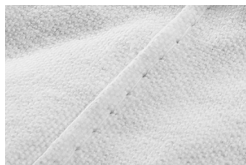
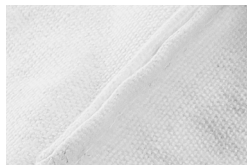
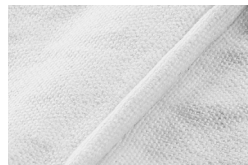


PLATE  
FLAT SEAM



ECRASÉE  
CRUSHED SEAM



PASSEPOIL  
PIPING SEAM



LISERÉ (OPTION)\*\*  
EDGING SEAM

TISSU COUTURE .....  
FABRIC SEAM

commande avec un accoudoir bas et haut sur le même module et / ou de largeur différente (sur devis)

6 - ACCOUDOIRS



Coussins déco / Decorative pillows (option)

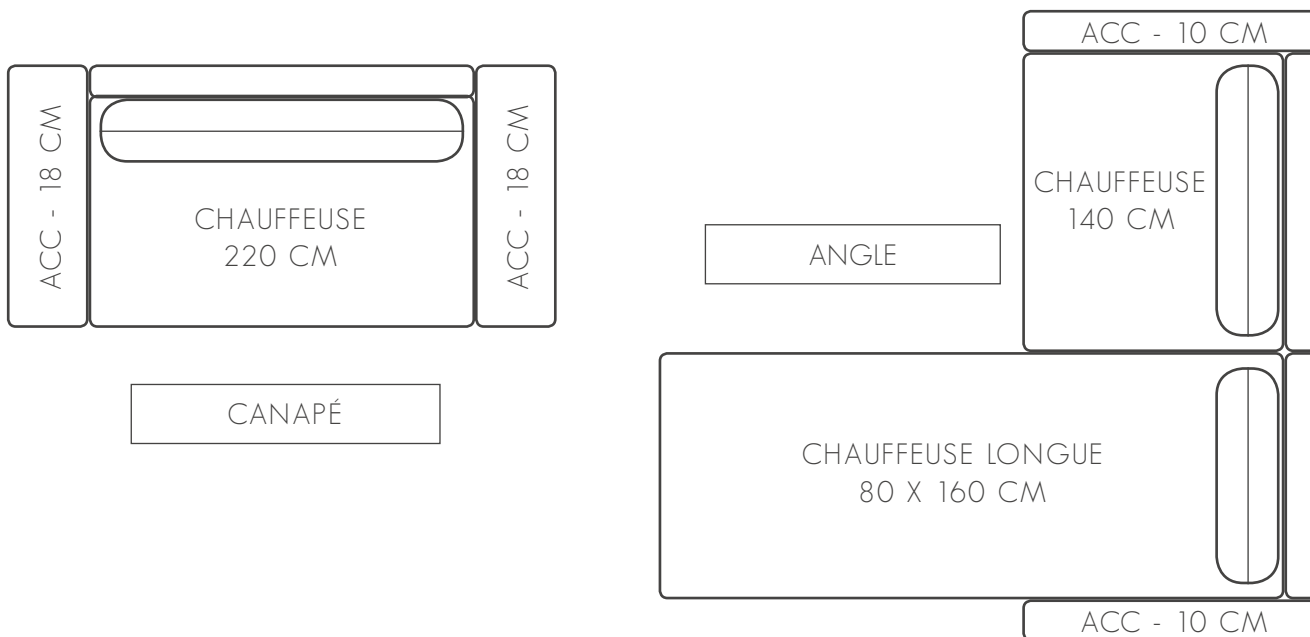
40 x 40 x ..... tissu : .....	couture plate	couture écrasée	couture passe-poil / tissu : .....
(fabric)	(flat seam)	(crushed seam)	(piping seam / fabric)
50 x 50 x ..... tissu : .....	couture plate	couture écrasée	couture passe-poil / tissu : .....
(fabric)	(flat seam)	(crushed seam)	(piping seam / fabric)
60 x 60 x ..... tissu : .....	couture plate	couture écrasée	couture passe-poil / tissu : .....
(fabric)	(flat seam)	(crushed seam)	(piping seam / fabric)
30 x 50 x ..... tissu : .....	couture plate	couture écrasée	couture passe-poil / tissu : .....
(fabric)	(flat seam)	(crushed seam)	(piping seam / fabric)

# le Cocoon

## Charme



S O F A R E V  
LE CONFORT AUTREMENT



## → Dessinez votre Cocoon Charme / Draw your Cocoon Charme

Imprimez cette feuille et dessinez-nous simplement la configuration voulue :  
Print this sheet and simply draw us the desired configuration:

\* il n'est pas obligatoire de dessiner les coussins  
\* it is not mandatory to draw the cushions